

LONWORKS® NETWORK INTEGRATION SOFTWARE

OVERVIEW

Using Efficient Building Automation Corporation's Circon **Network Integrator** integration software, System Integrators can create, commission and maintain open, interoperable, multiple vendor facility automation systems. By combining familiar, intuitive Windows®-based presentation with Echelon® Corporation's powerful LNS® client-server network operating system, Network Integrator delivers the power to implement advanced, peer-to-peer LonWorks networks while being an economical leave behind tool for network maintenance and operations.

Adherence to LonMark® standards is integral with Network Integrator: standard functional profiles, device resource files, configuration properties, changeable types, dynamic network variables, and network variable aliases are all supported, and that means lifecycle savings by allowing you to choose best of breed components from Circon and other LonWorks-certified device manufacturers.

Network Integrator is fully integrated with the LNS network operating system and LNS server, Turbo Edition. LNS is the defacto industry standard platform for supporting multiple vendor, interoperable LonWorks networks. LNS client-server architecture allows multiple Network Integrator users to access a network simultaneously, from local or remote locations.

By conforming to the LNS plug-in standard, Network Integrator enables device plug-in software from any manufacturer to enhance productivity, allowing system integrators to install and maintain associated devices.

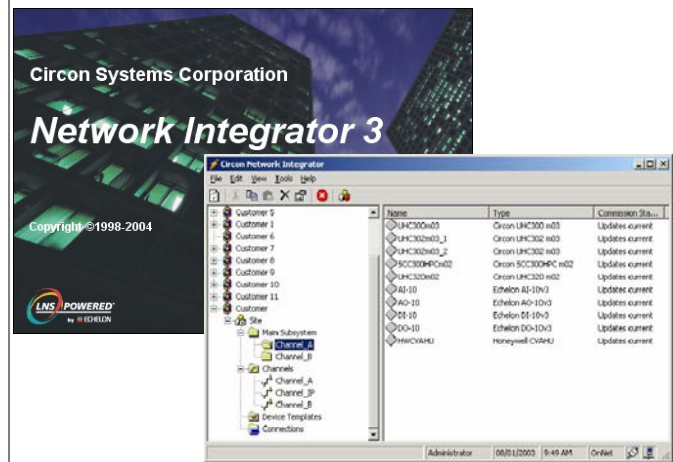
Network merge allows a large system to be installed as multiple independent networks initially, and later merged into one integrated network.

ORDERING INFORMATION

Part numbers:

11-0300: NI / LNS Turbo / 64 Device Credits

11-0301: NI / LNS 3.0 to Turbo Upgrade



ADVANTAGES

- Provides design, commissioning, operation and maintenance for open, interoperable, multiple vendor LonWorks networks
- Includes industry standard LNS network operating system, Turbo Edition
- Supports all LonMark interoperability standards
- Allows monitoring and configuring of devices without plug-ins, with integrated Inspector utility
- Merges independent networks into one network
- Simplifies replication of similar networks, subsystems and devices with XML export/import
- Provides an economical leave behind tool for network maintenance and operations
- Saves time and unnecessary service calls with flexible remote-access options
- Prevents unauthorized system access with multiple level password protection
- Integrates seamlessly with Visual Integrator to provide a complete operator workstation HMI



FEATURES

NETWORK INTEGRATION

- Create new networks and add new subsystems, channels, routers and devices
- Create network variables and message tag connections using Connection Wizard
- Copy and paste subsystems and devices
- Merge multiple independent networks
- Import device templates from XIFs
- Discover uncommissioned devices on network
- Supports LonMark devices and LonMark features such as standard functional profiles, configuration properties, and resource files
- Perform device maintenance functions: test, reset, repair, replace, wink, online, offline, download a new program
- Generate network database reports
- Export/import/merge network database via XML
- Conforms to the LNS plug-in standard, works with any device manufacturer's LNS plug-ins
- Monitor and configure devices without plug-ins
- Perform LonMaker®-compatible network database backup and restore

INTUITIVE HUMAN-MACHINE INTERFACE

- Native Windows-based application that uses standard Windows-like presentation
- Navigate among networks, channels, subsystems, and devices using familiar Windows Explorer tree view

LOCAL AND REMOTE NETWORK ACCESS

- Operate locally or remotely via Internet or other IP networks
- Dialup remote networks using modems over public standard telephone network
- Support multiple networks

ACCESS SECURITY

- Prevent access by unauthorized operator with username and password security check
- Log operator actions in audit trail database

MAXIMUM LIMITS PER NETWORK

- Application device types: 32,385 maximum
- Channels: 1,000 maximum
- Devices: 32,385 maximum (each router or network service device counts as two devices)
- Domain: 1 maximum per network
- Routers: 1,000 maximum

DEVICE CREDITS

- When a device is commissioned, an LNS device credit is consumed
- First 64 LNS device credits included at no charge with Network Integrator
- Additional credits can be purchased from Echelon Corporation

PLATFORM REQUIREMENTS

- Operating Systems: Windows XP, Windows Vista
- LNS Server Turbo Edition
- Processor: 1 GHz 32-bit (x86) or higher
- Memory: 1 GB minimum
- Hard drive: 1 GB minimum free disk space, ATA-100 interface
- Display: video card and monitor with 1024 x 768 pixel resolution or greater
- LonWorks network interface: LNS or IP network interface required

EFFICIENT BUILDING AUTOMATION CORPORATION

401 – 8342 130th Street, Surrey BC, Canada V3W 8J9

Telephone: +1 604.248.4404 Facsimile: +1 604.248.4405

Website: www.circon.com



Specifications subject to change without notice.

Circon™ is a trademark of Efficient Building Automation Corporation. Echelon®, i.LON®, LNS®, LonWorks®, LonMaker®, and LNS® are registered trademarks of the Echelon Corporation registered in the United States and other countries. Windows® is a registered trademark of Microsoft Corporation registered in the United States and other countries. LonMark® and the LonMark Logo are managed, granted, and used by LonMark International under a license granted by Echelon Corporation.

DOCUMENT # 80-0302 / REVISION 2.0 / PRINTED IN CANADA