

USING NETWORK INTEGRATOR

OVERVIEW

This course teaches students how to engineer, set-up, and configure an LNS®-based LONWORKS® network of Circon HVAC Direct Digital Controllers (DDC) using Circon's Network Integrator network management tool.

This course is a must if you are a:

- Controls Integrator
- Network Design Engineer
- Control Technician

Students learn the steps to design and configure a LONWORKS network and perform the configuration operations required to fully configure a network of Circon HVAC controllers, using Network Integrator.

COURSE OUTLINE

OVERVIEW

- Overview Network Integrator network management tool.

INSTALLATION AND REGISTRATION

- Review Network Integrator system and licensing requirements.
- Procedure for installing and registering Network Integrator.

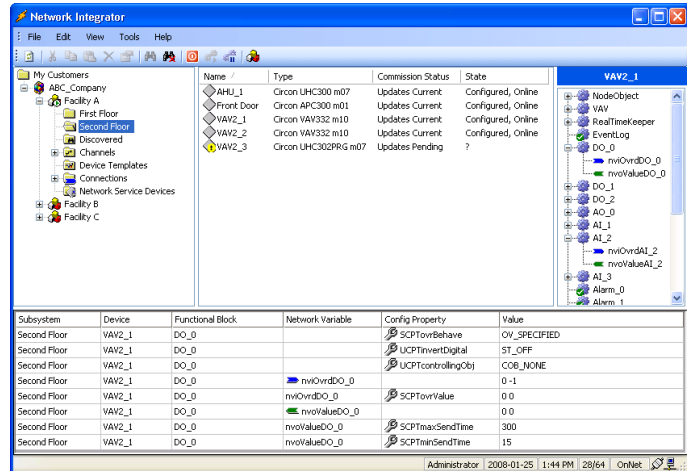
CONFIGURING SITES

- Define and configure customers (sites) using the Network Integrator Site Management utility.

(continued on back)

ORDERING INFORMATION

Part number 10-0033
Course duration 3 days



COURSE PREREQUISITES

- Basic computer skills with Microsoft Windows
- Experience and knowledge of HVAC systems and control system terminology
- Experience and knowledge of analog and digital electronic concepts as well as electrical concepts

LEARNING OBJECTIVES

The student will be able to:

- Demonstrate an understanding of the features of Network Integrator
- Create and configure a complete LonWorks network using Network Integrator
- Design and configure a network of Circon controllers

LABORATORY WORK

- Laboratory intensive class
- Hands-on exercises allow the student to practice using Network Integrator

WHAT YOU RECEIVE

- Certificate of completion



LONMARK
PARTNER



USING NETWORK INTEGRATOR

COURSE OUTLINE *continued*

DESIGNING A LONWORKS NETWORK

- Guidelines for designing LonWorks networks.

CONFIGURING AND COMMISSIONING A LONWORKS NETWORK

- Guidelines for configuring a typical LonWorks network using Network Integrator.

ADDING PLUG-INS AND DEVICE TEMPLATES

- Procedure for installing and registering LNS plug-ins.

ADDING AND CONFIGURING DEVICES

- Procedure for adding and configuring LonWorks based devices.

NETWORK VARIABLES AND SNVTs

- Discuss the concept of network variables (NVs) and Standard Network Variable Types (SNVTs) as well as a device's Configuration Parameters (CPs) and Standard Configuration Property Types (SCPTs).

MAKING CONNECTIONS

- Create network variable and message tag connections between devices using Connection Wizard.

NETWORK MAINTENANCE TASKS

- Perform routine maintenance to ensure that the control system is operating efficiently and properly.
- Diagnose potential control deficiencies before they become problems.

REMOTE CLIENT CONFIGURATION

- Set up Network Integrator 3 as a remote full LNS client and as a remote lightweight LNS client.

OPTIMIZING NETWORK COMMUNICATIONS

- Review how network communications work on a LonWorks network and outline the factors that affect network traffic.

TESTING AND VERIFYING NETWORK DEVICES

- Procedure for testing and verifying devices on a LonWorks control network.

ADDING OPERATOR GROUPS AND OPERATORS

- Review the steps to add, delete, and modify operators groups and operators using Network Integrator's Site Management utility.

CIRCON SYSTEMS CORPORATION

110 – 6660 McMillan Way, Richmond, BC, Canada V6W 1J7

telephone 604.232.4700 technical support 1.877.350.2299 facsimile 604.232.4747

toll free 1.800.338.1866 website www.circon.com



Specifications subject to change without notice.

Circon™ is a trademark of Circon Systems Corporation. Echelon®, LonWorks®, and LNS® are trademarks of the Echelon Corporation registered in the United States and other countries. Windows® is a trademark of Microsoft Corporation registered in the United States and other countries.

PART # 80-0309 / REVISION # 1.8 / PRINTED IN CANADA