

GRAPHICAL USER INTERFACE FOR FACILITY MANAGEMENT

OVERVIEW

Using Efficient Building Automation Corporation's Circon **Visual Integrator** HMI software, facility owners and managers can accurately and reliably gather information from a facility, take actions that help minimize costs, save energy and improve comfort. Visual Integrator (VI) is a fully featured facility management interface to your open, interoperable DDC systems.

The intuitive graphical user interface, customized to each facility, allows you to navigate quickly through the entire system, from the high level view, to individual buildings, to detailed equipment views. You can monitor the system to verify operation, diagnose problems and respond immediately when necessary. Setpoints and operating values are displayed in real time, and operator changes to schedules, setpoints and operating parameters are accomplished with ease.

Using remote or local access, VI expands with your facility, to other sites across town or across the country. With remote access you save the time and cost of unnecessary service calls.

Alarms are displayed the moment they are received. You know when, where and why a problem has occurred, allowing immediate corrective action long before comfort or safety is affected.

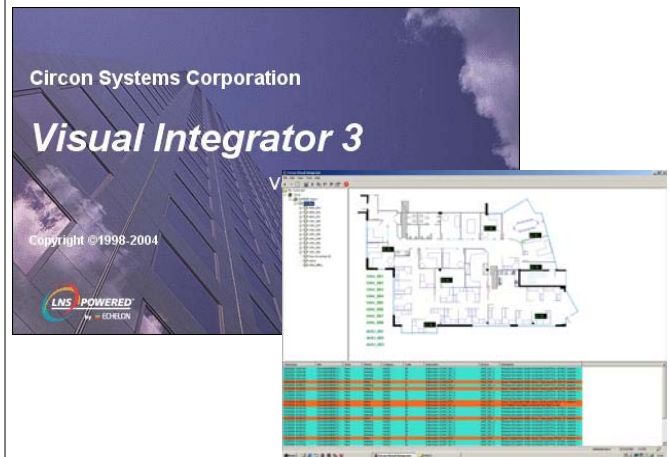
VI's extensive historical alarm, event and trend data logging combined with comprehensive trend charting and reports packages allow you to analyze operating strategies and plan your maintenance resources to meet the needs of an ever changing business environment.

VI works with open, interoperable LonWorks® networks meaning lifecycle savings through allowing the choice of best of breed components from Circon and other manufacturers of LonWorks technology devices.

ORDERING INFORMATION

Part numbers (all with LNS® Turbo):

11-0303: VI Single site / 10 devices / 1 device credit
 11-0304: VI Single site / 10 devices / 64 device credits
 11-0305: VI Single site / 64 devices / 1 device credit
 11-0306: VI Single site / 64 devices / 64 device credits
 11-0307: VI Single site / 132 devices / 1 device credit
 11-0308: VI Single site / 132 devices / 64 device credits
 11-0309: VI Multi site / unlimited devices / 1 device credit



ADVANTAGES

- Simplifies the creation of facility management HMIs for open, interoperable LonWorks networks, using built-in fully-featured graphical design tools and libraries
- Enhanced graphical user interface provides intuitive navigation from a high level site map to complex equipment details
- Works with Echelon® Corporation's LNS® Turbo Edition.
- Supports accurate and reliable analysis, troubleshooting and maintenance planning using extensive alarm, event and trend logging
- Prevents unauthorized system access with multiple level password protection
- Provides alarm history and operator audit trail reports
- Allows design and commissioning of LonWorks networks with Network Editor add-on; an economical leave behind tool for maintenance and operations
- Integrates LNS plug-ins to enable multiple vendor device configuration and management
- Saves time and unnecessary service calls with flexible remote-access options



FEATURES

INTUITIVE HUMAN-MACHINE INTERFACE

- Native Windows®-based application that uses standard Windows presentation
- Navigate among customers, sites, schedules and devices using familiar Windows Explorer tree view and multi-tab view
- View navigation tree, graphics and alarms on one screen

GRAPHICS DEVELOPMENT

- Create custom equipment views, site maps and more with complete freedom using built-in Graphics Editor
- Reduce development time with graphics images library
- Enhance graphics usability with ActiveX controls library
- Generate graphics automatically with Document Wizard

SCHEDULING

- Create schedules graphically using Network Scheduler
- Include Normal, Holiday and Override events
- Deploy device-resident or PC-resident scheduling

CONTINUOUS DATA LOGGING

- Log alarms, events, trend and I/O runtime data
- Store information in SQL database for easy access and enterprise level information exporting

COMPREHENSIVE, ACCURATE TRENDING

- Plot data with multiple I/O points per chart
- Customize plots for colors, title, legend and more
- Combine historical and realtime trending
- Print trend plots on networked Windows-supported printers

STANDARD AND CUSTOM REPORTS

- View standard reports with data in tabular format

LOCAL AND REMOTE SITE ACCESS

- Operate local site via LonWorks or IP network
- Access remote sites over Internet or IP networks
- Dialup remote sites using modems over public standard telephone system
- Work with multiple customers and sites

ALARMING AND ALARM MANAGEMENT

- Annunciate alarms immediately when received
- Acknowledge and clear alarms by authorized operator
- Filter alarms view by customer, site, priority and alarm state
- Send alarm notification by email

ACCESS SECURITY

- Prevent access by unauthorized operator with username and password security check
- Assign permissions to operator groups to restrict access to customers, sites and functions
- Log operator actions in audit trail database

NETWORK INTEGRATION AND MAINTENANCE

- Fully integrated with Echelon LNS Turbo Edition
- Launch LNS device plug-ins for device configuration and detailed device diagnostics
- Create, commission and maintain open, multivendor, interoperable LonWorks network with Network Editor add-on
- Create and restore site or database backup
- Synchronize devices with PC's local date and time

SYSTEM REQUIREMENTS - VI LNS SERVER

- Operating systems: Windows XP, Windows Vista
- Microsoft SQL Server 2005 (Express Edition included)
- LNS Server Turbo Edition
- Processor: 1 GHz 32-bit (x86) or higher
- Memory: 1 GB RAM minimum
- Hard drive: 2 GB minimum free disk space, ATA-100

EFFICIENT BUILDING AUTOMATION CORPORATION

401 – 8342 130th Street, Surrey BC, Canada V3W 8J9

Telephone: +1 604.248.4404 Facsimile: +1 604.248.4405

Website: www.circon.com



Specifications subject to change without notice.

Circon™ is a trademark of Efficient Building Automation Corporation. Echelon®, i.LON®, LNS®, LonWorks®, LonMaker®, and LNS® are registered trademarks of the Echelon Corporation registered in the United States and other countries. Windows® is a registered trademark of Microsoft Corporation registered in the United States and other countries. LonMark® and the LonMark Logo are managed, granted, and used by LonMark International under a license granted by Echelon Corporation.

DOCUMENT # 80-0261 / REVISION 2.0 / PRINTED IN CANADA